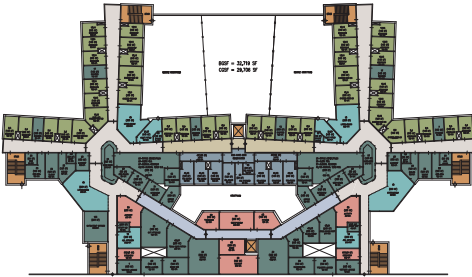


Waypoint Centre for Mental Health Care

Penetanguishene, Ontario, Canada



architecture+ provided planning, parti, floor plans, and specialty advisory services for this new 200-bed forensic mental health facility. This \$471 million redevelopment project was built on schedule and on budget using a Design-Build-Finance-Maintain model and is LEED Gold Certified.

architecture+ served as a subconsultant to Stantec