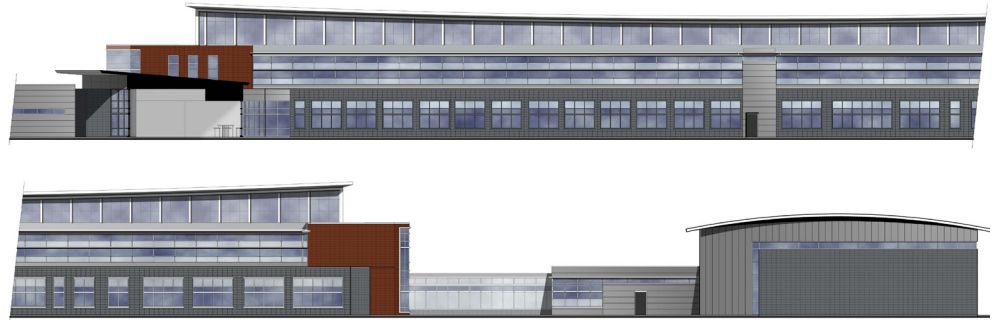
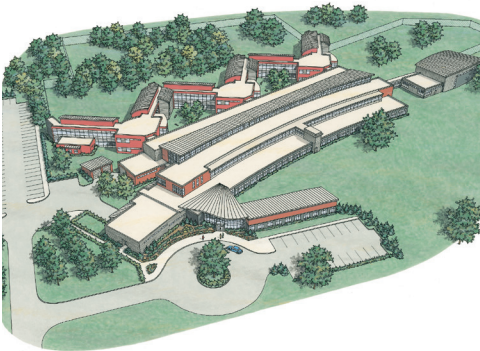


## St. Thomas Tertiary Psychiatric Hospital St. Joseph Health System

London, Ontario



This hospital is part of the reconfiguration of the Provision of Mental Health Services in the Province of Ontario. It is designed to accommodate 50% expansion in beds, and clinical and support space. We provided advice during the programming phase on worldwide trends and innovations in the design of psychiatric hospitals. We collaborated with the client and programmers to imagine appropriate new physical models for delivery of tertiary behavioral health services.

St. Thomas is sited to take advantage of an extraordinary grove of trees on the site; all patient bedrooms have a view into those trees. The facility has been developed utilizing internal zoning techniques that facilitate staff control and enable a higher level of secure physical freedom for patients. We were subsequently engaged to develop detailed Master Plans for site and schematic design.

### Award

Merit Award, AIA Eastern New York Chapter, 2005